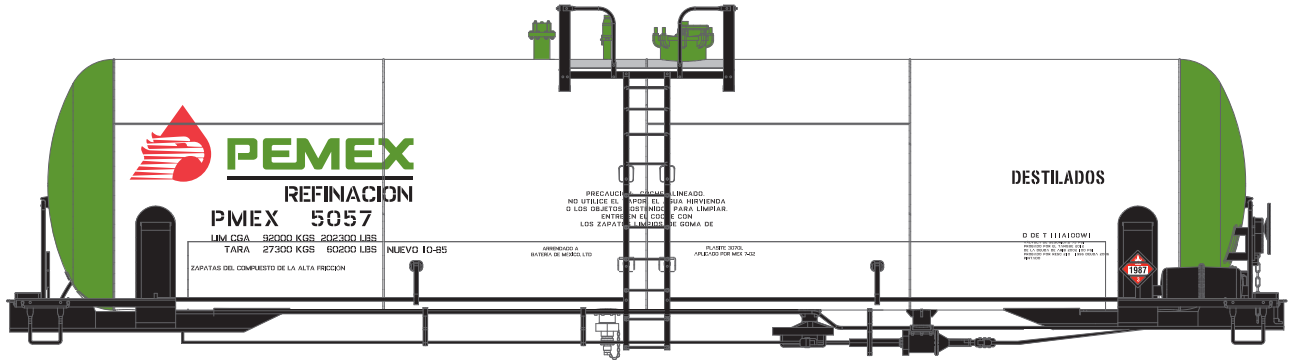




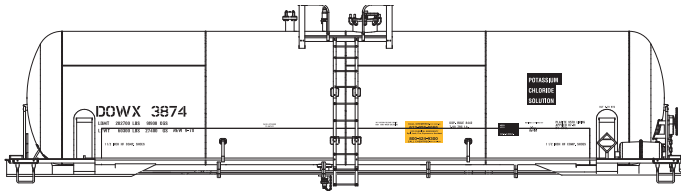
Announced: 4-21-09  
**Orders Due: 5-15-09**  
 ETA: October 2009

# 50' RTC 20900 Gal GS Tank Car

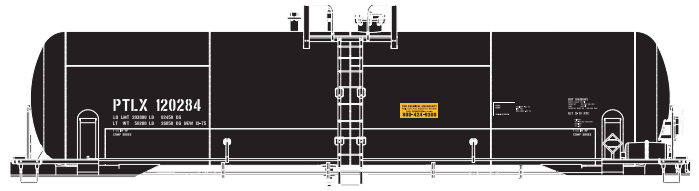


Era: 1970s - Now

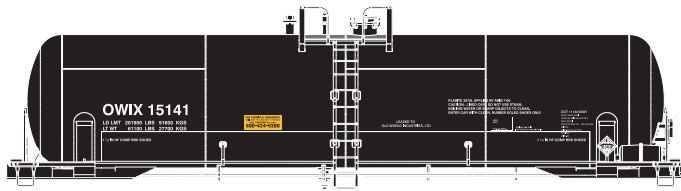
- NEW tooling
- Weighted for optimal performance
- Metal wire form grab irons
- Equipped with McHenry® scale AAR upper/lower shelf knuckle couplers per prototype practice
- Fully assembled
- Photo-etched platforms
- RP25 profile machined metal wheel sets



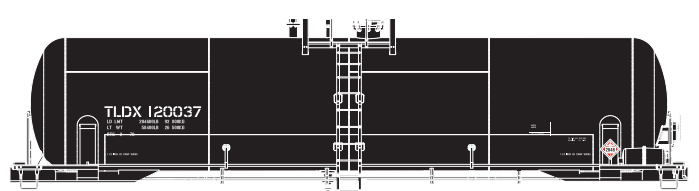
\_\_\_ 73926 DOWX #1 \$27.98  
 \_\_\_ 73927 DOWX #2 \$27.98



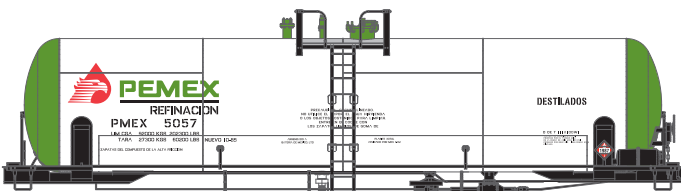
\_\_\_ 73932 PTLX #1 \$27.98  
 \_\_\_ 73933 PTLX #2 \$27.98



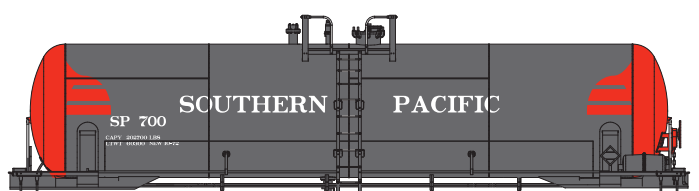
\_\_\_ 73928 OWIX #1 \$27.98  
 \_\_\_ 73929 OWIX #2 \$27.98



\_\_\_ 73934 TLDX #1 \$27.98  
 \_\_\_ 73935 TLDX #2 \$27.98



\_\_\_ 73930 Pemex #1 \$27.98  
 \_\_\_ 73931 Pemex #2 \$27.98



\_\_\_ 73936 Southern Pacific Fuel Tender \$27.98\*  
 \_\_\_ 73900 Undecorated \$27.98

Athearn Trains • 1550 Glenn Curtiss Street • Carson, CA • 90746  
 310-763-7140 • fax 310-763-7449 • www.athearn.com