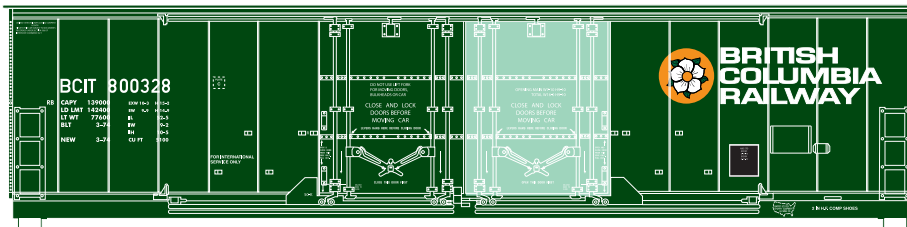


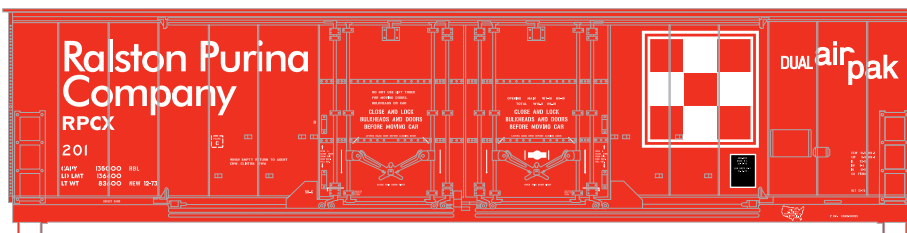


Announced: 10-14-08
Orders Due: 11-14-08
 ETA: April 2009

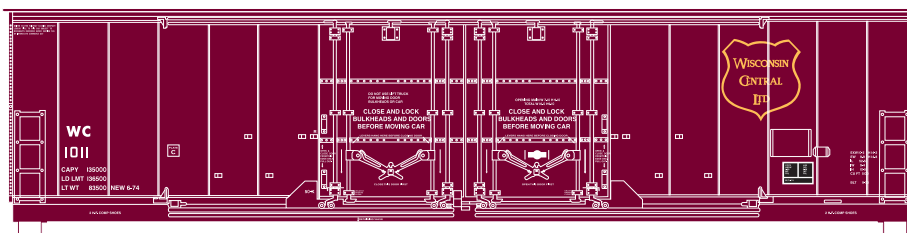
50' Evans Double Plug Door Box Car



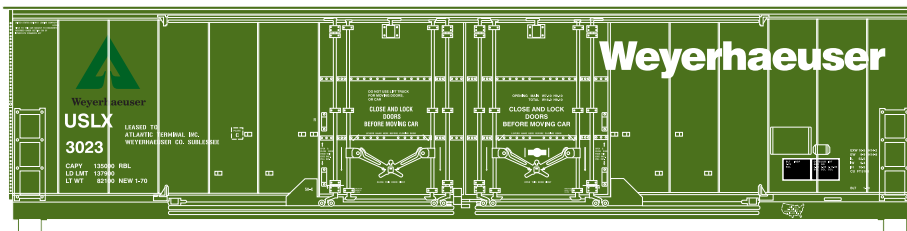
___ 91278 BC Rail #1 \$18.98
 ___ 91279 BC Rail #2 \$18.98



___ 91280 Ralston Purina #1 \$18.98
 ___ 91281 Ralston Purina #2 \$18.98



___ 91282 Wisconsin Central #1 \$18.98
 ___ 91283 Wisconsin Central #2 \$18.98



___ 91284 Weyerhaeuser #1 \$18.98
 ___ 91285 Weyerhaeuser #2 \$18.98

Era: Mid 1970s - Present

- Fully assembled
- Razor-sharp printing and painting
- McHenry® scale knuckle spring couplers
- Separately applied grabirons, ladders, stirrup steps, brake wheel, brake stand and underbody details
- Perfect for small home layouts
- RP25 profile machined 33" metal wheel sets
- Weighted for optimum performance

Athearn Trains • 1550 Glenn Curtiss Street • Carson, CA • 90746
 310-763-7140 • fax 310-763-7449 • www.athearn.com