



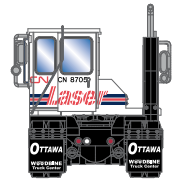
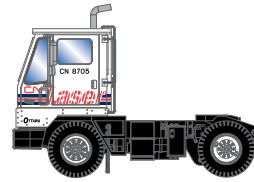
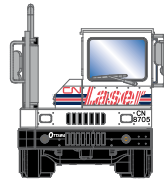
HO Yard Tractor

Announced 2.24.17
Orders Due: 3.24.17

ETA: January 2018

Burlington Northern

Canadian National Laser



ATH29112

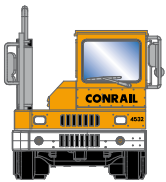
HO RTR Yard Tractor, BN

ATH29113

HO RTR Yard Tractor, CN/Laser

Conrail

Canadian Pacific



ATH29114

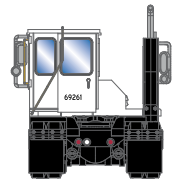
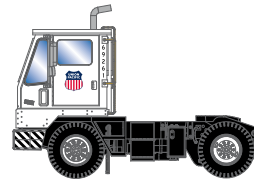
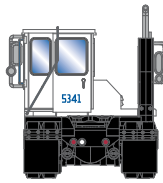
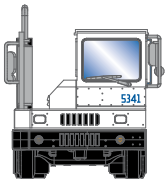
HO RTR Yard Tractor, CR

ATH29115

HO RTR Yard Tractor, CPR/Yellow

Santa Fe

Union Pacific



ATH29116

HO RTR Yard Tractor, SF

ATH29117

HO RTR Yard Tractor, UP/ White

All Carriers

PROTOTYPE AND BACKGROUND INFO:

A terminal tractor, known in the United States as a spotter truck, spotting tractor, yard truck, yard goat, yard jockey or mule, is a semi-tractor intended to move semi trailers within a cargo yard, warehouse facility, or intermodal facility, much like a switcher locomotive is used to position railcars.

MODEL FEATURES:

- Factory assembled with many detail parts applied
- Molded cab interior with separately applied steering wheel
- Clear window glazing
- Rubber tires

\$22.98SRP



Visit Your Local Retailer | Visit www.athearn.com | Call 1.800.338.4639